



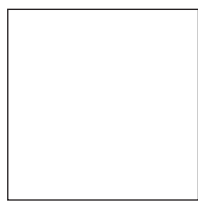
811 N. 68th Street  
Milwaukee, WI 53213

**Update:**

Your New 2010-2011  
Uniform Place Catalog has arrived!

**10% OFF!**  
**ENTIRE PURCHASE**  
Not valid on previously purchased items  
Cannot be combined with any other coupon.  
VALID NOW - July 15, 2010.  
The Uniform Place  
811 N. 68th Street • Milwaukee, WI 53213

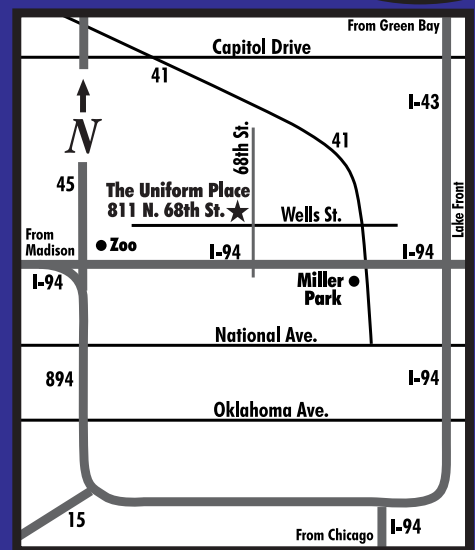
**10% OFF!**  
**ENTIRE PURCHASE**  
Not valid on previously purchased items  
Cannot be combined with any other coupon.  
VALID Oct. 1-31st, 2010.  
The Uniform Place  
811 N. 68th Street • Milwaukee, WI 53213



Your best  
source for  
quality  
school  
clothing  
because  
not all  
uniforms  
make  
the grade.



See our coupon  
on back page  
for  
additional  
savings



The Uniform Place  
is located off of the  
68th-70th Street exit  
of I-94, between the  
Milwaukee County Zoo  
and Miller Park.  
We are next to Simma's  
Ovens and across the  
street from  
Balistreni's Pizza.

**New Hours:**

Effective June 1st, 2010  
Closed Monday  
Tuesday 10-7  
Wednesday 10-5  
Thursday 10-7  
Friday 10-5  
Saturday 10-5

Additional Hours August 1st - Sept. 30th  
Mondays 10-5

811 N. 68th Street  
(68th at Wells Street)  
Milwaukee, WI 53213  
Phone: 414.258.7888  
800-236-6320  
Fax: 414.258.8223

www.theuniformplace.com  
Please Save Important Uniform Information Enclosed



**General Catalog**  
June 1, 2010 - June 1, 2011



## GIRLS SLACKS and SHORTS

**SLACKS** Navy, Khaki, Black

- Twill 65% Polyester/35% Cotton
- Corduroy 75% Cotton/25% Polyester



**Pleated Front, Half Elastic**

Girls 3-6x	\$21.00
Girls 7-16 Reg.	24.00
Half Sizes	29.00

**Pleated Front, Straight Waistband**

7-16 Reg./Slim	\$24.00
3-27 Junior	27.00



**Flat Front, Straight Waistband, Flare**

Twill Only	
7-16 Reg.	\$24.00
3-25 Junior	27.00
Half Sizes	29.00



**SHORTS** Navy, Khaki

- Twill 65% Polyester/35% Cotton

**Pleated Front, Half Elastic**

Girls 3-6x	\$19.00
Girls 7-16 Reg.	22.00
Half Sizes	26.00

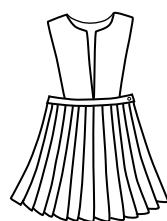
**Pleated Front, Straight Waistband**

7-16 Reg./Slim	\$22.00
3-27 Junior	25.00

**Flat Front, Straight Waistband**

7-16 Reg./Slim	\$22.00
3-27 Junior	25.00

## JUMPERS and SKIRTS



### DENNIS

- Made of long lasting Dennis cloth
- Generous 3" hem
- Elastic inside waist for comfort and fit
- Overlocked seams

**JUMPERS**

Girls 3-6	\$53.75
Girls 7-20	54.75
Half Sizes	54.75



**SKIRTS**

Girls 3-6	\$51.75
Girls 7-20	52.75
Half Size	52.75
Junior 1-19	54.75
Junior 21 and up	56.75
Wool Blend	58.75

## SKORTS



**SKORTS**

Plaid	
Girls 3-6	\$49.75
Girls 7-20	51.75
Junior	53.75

Navy, Khaki

Girls 3-6	\$26.00
Girls 7-20	28.00
Junior	29.00
and up	

## GIRLS SHIRTS and BLOUSES

**ROUND COLLAR, BROADCLOTH**

White (Light Blue & Yellow add \$1.00)



Girls 3-16	short sleeve	\$12.00
	<b>PACK OF 3</b>	33.00
Girls 3-16	long sleeve	14.00
Adult S-3XL	short sleeve	14.00
	<b>PACK OF 3</b>	39.00
Adult S-3XL	long sleeve	16.00

**ROUND COLLAR, KNIT**

White

**Short Sleeve Only**

Girls XXS-XL	\$17.00
--------------	---------

**POINTED COLLAR, OXFORD**

White, Light Blue



Girls 4-16	short sleeve	\$16.00
Girls 6-16	long sleeve	18.00
Adult S-2XL	short sleeve	20.00
Adult S-2XL	long sleeve	22.00

## BIKE SHORTS and LEGGINGS

**BIKE SHORTS** Navy

- Great under jumpers and skirts
- Comfortable 90% Cotton/10% Lycra

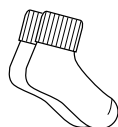
Youth XXS-XL	\$15.50
Junior S-XL	17.50

**LEGGINGS** Navy

- Available in tapered or flare leg
- Great for colder days
- Comfortable 90% Cotton/10% Lycra

Youth XXS-XL	\$17.50
Junior S-XL	19.50

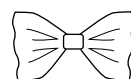
## ACCESSORIES



**Knee Highs, Socks, Tights**  
Various Sizes \$2.75 and up

Belts

Various Sizes 7.00 and up



**Hair Bows and Scrunchies**  
Various Sizes \$5.00 and up

## MISCELLANEOUS

Fabric 60" wide \$34.00 yd.  
Special orders \$26.00 ea.



## UNISEX PULL-ON PANTS

- All elastic waist
- Full, easy fit
- Twill 65% Polyester/35% Cotton

Youth Sizes	Navy	
XXS-S		\$25.00
M-XL		29.00
Adult Sizes	Navy	
S-2XL		35.00

## KNIT SHIRTS and TURTLENECKS

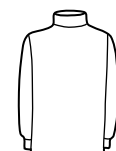


**KNIT THREE BUTTON SHIRTS**

White, Light Blue, Red, Navy, Hunter Green, Yellow

- Reinforced seams for durability
- 60% Cotton/40% Poly

Youth S-XL	short sleeve	\$17.00
	<b>PACK OF 3</b>	48.00
Youth S-XL	long sleeve	19.00
	<b>PACK OF 3</b>	54.00
Adult S-3XL	short sleeve	21.00
	<b>PACK OF 3</b>	60.00
Adult S-3XL	long sleeve	23.00
	<b>PACK OF 3</b>	66.00



**TURTLENECKS**

White, Light Blue, Red, Navy, Hunter Green, Yellow

Youth XS-XL	\$17.00	
	<b>PACK OF 3</b>	48.00
Adult S-3XL	21.00	
	<b>PACK OF 3</b>	60.00

## SWEATERS



Navy, Red, Hunter Green, White

- True uniform colors in 100% acrylic
- 1 yr. warranty
- Sturdy seams, dyed to match thread

**Pullovers**

V-neck and Crew-neck	
Youth XXS-XL	\$23.00
Adult S-XL	30.00
Adult 2XL-3XL	32.00

**Vests**

V-neck	
Youth XXS-XL	\$20.00
Adult S-XL	27.00
Adult 2XL-3XL	29.00

**Cardigans**

V-neck and Crew-neck	
Youth XXS-XL	\$26.00
Adult S-XL	33.00
Adult 2XL-3XL	35.00

**Zipper Cardigans**

Youth XXS-XS	\$21.00
Youth S-XL	24.00
Adult S-XL	27.00

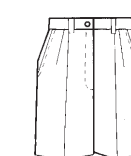
## BOYS PANTS and SHORTS



**PANTS** Navy, Khaki, Black

- Double Knee
- Twill 65% Polyester/35% Cotton
- Corduroy 75% Cotton/25% Polyester
- Available in various pleated and flat front styles, with or without elastic

Boys 3-7 Reg./Slim	\$23.00
Boys 8-16 Reg./Slim	26.00
Prep Waist 27-32	28.00
Mens Waist 33-42	31.00
Husky Waist 25-32	31.00
Husky Waist 33 and up	33.00



**SHORTS** Navy, Khaki

- Twill 65% Polyester/35% Cotton

**Pleated Front, Half Elastic**

Boys 3-7 Reg./Slim	\$19.00
Boys 8-16 Reg./Slim	22.00
Husky Waist 25-32	26.00
Husky Waist 33 and up	28.00

**Flat Front, Straight Waistband**

<b>Longer Length</b>	
Boys 8-16 Reg./Slim	\$22.00
Prep Waist 27-32	24.00
Mens Waist 33-42	26.00
Husky Waist 25-32	26.00
Husky Waist 33 and up	28.00

## BOYS OXFORDS



Button Down OxforDs White, Light Blue

Youth 6-20	short sleeve	\$15.00
Youth 6-20	long sleeve	17.00
Adult M-XL	short sleeve	19.00
Adult M-XL	long sleeve	21.00



Visit Us At:  
[www.theuniformplace.com](http://www.theuniformplace.com)

Mail and Phone Orders Welcome.  
1.800.236.6320

In Milwaukee Call: 414.258.7888.  
UPS shipping + handling \$9.50